

# + SUM UP +

Do any exercise below and find your answer in the code key. Notice the letter above it. Print this letter in the box at the bottom of the page that contains the number of the exercise. Keep working and you will create a special message.

## CODE KEY

W	G	H	D	L	S	A	E	O	Y	I	U	T	C	M	R	P	N	F
-18	-15	-13	-10	-8	-7	-6	-4	-3	-1	0	2	3	4	5	7	8	14	17

- |               |                |                |
|---------------|----------------|----------------|
| ① $-8 + 2 =$  | ①⑦ $2 + -9 =$  | ③③ $-8 + 1 =$  |
| ② $6 + 8 =$   | ①⑧ $-9 + -4 =$ | ③④ $3 + -6 =$  |
| ③ $5 + -9 =$  | ①⑨ $-7 + 3 =$  | ③⑤ $-2 + 7 =$  |
| ④ $-9 + 1 =$  | ②⑩ $3 + 4 =$   | ③⑥ $-5 + 1 =$  |
| ⑤ $-3 + -1 =$ | ②⑪ $-7 + -8 =$ | ③⑦ $-1 + 4 =$  |
| ⑥ $-1 + 5 =$  | ②⑫ $4 + -8 =$  | ③⑧ $4 + -7 =$  |
| ⑦ $-3 + 6 =$  | ②⑬ $-6 + 9 =$  | ③⑨ $-4 + 6 =$  |
| ⑧ $9 + -2 =$  | ②⑭ $-10 + 3 =$ | ④⑩ $-9 + -6 =$ |
| ⑨ $-3 + 3 =$  | ②⑮ $6 + -7 =$  | ④⑪ $7 + -20 =$ |
| ⑩ $-5 + 9 =$  | ②⑯ $-9 + 6 =$  | ④⑫ $-15 + 8 =$ |
| ⑪ $-7 + -3 =$ | ②⑰ $-3 + 5 =$  | ④⑬ $7 + -3 =$  |
| ⑫ $8 + -8 =$  | ②⑱ $2 + -5 =$  | ④⑭ $-1 + 8 =$  |
| ⑬ $-1 + -6 =$ | ②⑲ $-7 + 9 =$  | ④⑮ $3 + -9 =$  |
| ⑭ $-20 + 7 =$ | ③⑰ $8 + -5 =$  | ④⑯ $-1 + 9 =$  |
| ⑮ $-9 + -9 =$ | ③⑱ $-1 + -2 =$ | ④⑰ $8 + -12 =$ |
| ⑯ $-7 + 1 =$  | ③⑲ $8 + 9 =$   | ④⑱ $-3 + -4 =$ |

1	2	3	4	5	6	7	8	9	10	11	12	13	14	15	16	17	18	19	20	21	22	23	24
25	26	27	28	29	30	31	32	33	34	35	36	37	38	39	40	41	42	43	44	45	46	47	48

# What should you do when you can't sleep?

Do any exercise below and find your answer in the corresponding answer column. The letter of the exercise goes in the box that contains the number of the answer. Keep working and you will discover the answer to the title question.

<b>T</b> 3 - 7 =	<b>E</b> -5 - -15 =	<b>10</b> 17	<b>E</b> -3 - -1 =	<b>38</b> 18
<b>R</b> -2 - 5 =	<b>R</b> 8 - -9 =	<b>24</b> 8	<b>C</b> -7 - 8 =	<b>25</b> -10
<b>E</b> 7 - -1 =	<b>D</b> 3 - 13 =	<b>12</b> 2	<b>S</b> 2 - -5 =	<b>26</b> -2
<b>U</b> 9 - 3 =	<b>O</b> -2 - -4 =	<b>4</b> 10	<b>M</b> 13 - 4 =	<b>42</b> 0
<b>O</b> -5 - -10 =	<b>Y</b> -6 - 6 =	<b>17</b> -8	<b>O</b> -2 - -20 =	<b>33</b> -15
<b>F</b> 1 - 11 =	<b>E</b> 15 - 7 =	<b>27</b> -10	<b>F</b> -9 - -9 =	<b>1</b> 9
<b>H</b> -8 - -2 =	<b>D</b> -9 - -1 =	<b>30</b> -12	<b>B</b> 6 - 16 =	<b>8</b> 7
<b>C</b> 4 - -4 =	<b>O</b> 5 - 5 =	<b>35</b> -1	<b>O</b> -7 - 4 =	<b>3</b> 14
<b>O</b> -3 - -7 =	<b>E</b> -4 - 10 =	<b>20</b> 0	<b>E</b> 4 - 7 =	<b>16</b> -3
<b>A</b> -1 - 12 =	<b>T</b> -9 - -5 =	<b>7</b> 4	<b>L</b> -4 - -7 =	<b>36</b> -14
<b>E</b> 2 - 9 =	<b>N</b> 6 - 7 =	<b>28</b> 17	<b>P</b> 7 - -4 =	<b>6</b> 3
<b>F</b> 17 - 4 =	<b>S</b> 15 - -2	<b>14</b> -17	<b>G</b> -7 - -7 =	<b>40</b> -11
<b>O</b> -11 - -2 =	<b>O</b> -8 - -12 =	<b>22</b> -4	<b>V</b> 7 - -7 =	<b>18</b> 0
<b>T</b> 6 - -3 =	<b>H</b> -11 - 6 =	<b>19</b> -14	<b>D</b> -7 - 7 =	<b>39</b> 11

1	2	3	4	5	6	7	8	9	10	11	12	13	14	15	16	17	18	19	20	21
22	23	24	25	26	27	28	29	30	31	32	33	34	35	36	37	38	39	40	41	42

# What Should You Do If You Are Surrounded By 20 Lions, 15 Tigers And 10 Leopards?



Do any exercise below and find your answer in one of the boxes at the bottom of the page. Write the letter of the exercise in this box. (To make it easier to find your answer, the answers are arranged in order from smallest to largest.) Keep working and you will discover the answer to the title question.

**Y**  $-6 + 2 =$

**O**  $3 - -7 =$

**D**  $9 + -4 =$

**E**  $-7 + -2 =$

**U**  $-3 - -20 =$

**O**  $-16 + 18 =$

**T**  $1 - 12 =$

**A**  $4 + -22 =$

**F**  $-4 - 10 =$

**O**  $31 - -6 =$

**A**  $-3 + 15 =$

**F**  $60 - -15 =$

**J**  $10 + 6 =$

**D**  $-5 - -20 =$

**H**  $4 - 14 =$

**T**  $12 + -6 =$

**S**  $-30 - 13 =$

**I**  $-8 + -9 =$

**O**  $-18 - -5 =$

**P**  $14 + -3 =$

**F**  $15 - -45 =$

**R**  $-7 + 1 =$

**T**  $-4 + -25 =$

**P**  $37 - 12 =$

**O**  $17 - 18 =$

**S**  $10 + -2 =$

**E**  $-11 - -4 =$

**U**  $-30 - 20 =$

**O**  $-1 - -8 =$

**T**  $-17 + 2 =$

**N**  $22 + -9 =$

**R**  $-20 - -8 =$

**U**  $-32 + 35 =$

**J**  $-32 + -32 =$

**M**  $-1 - -20 =$

**W**  $5 + -25 =$

**N**  $16 + -12 =$

**R**  $-48 + 43 =$

**M**  $2 - 10 =$

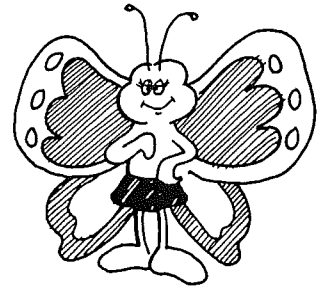
**T**  $-6 + 15 =$

**R**  $-69 - -69 =$

**G**  $50 + -53 =$

-64	-50	-43	-29	-20	-18	-17	-15	-14	-13	-12	-11	-10	-9	-8	-7	-6	-5	-4	-3	-1
0	2	3	4	5	6	7	8	9	10	11	12	13	15	16	17	19	25	37	60	75

# Why Didn't the Butterfly Go to the Dance?



Write each answer, then mark it in the answer column. For each set of exercises, there is one extra answer. Write the letter of this answer in the corresponding box at the bottom of the page.

<b>1</b>	$-5 + 2$	Answers:		<b>8</b>	$9 + -4$	Answers:							
	$7 + -3$	(V) 4	(C) -3		$3 + -7$	(S) 9	(A) -4						
	$-4 + -6$	(A) -8	(K) -10		$-6 + 15$	(I) 12	(U) 5						
<b>2</b>	$1 + -8$			<b>9</b>	$-7 + 1$								
	$-6 + -12$	(F) 7	(L) 13		$-5 + -12$	(A) 8	(T) -11						
	$-2 + 9$	(U) -7	(J) -18		$9 + -20$	(P) -6	(E) -17						
<b>3</b>	$-7 + 6$			<b>10</b>	$-4 + -3$								
	$5 + -8$	(G) -1	(N) -3		$-4 + 3$	(C) -7	(R) 1						
	$12 + 13$	(Y) 25	(H) 18		$4 + -3$	(T) 7	(O) -1						
<b>4</b>	$-10 + -10$			<b>11</b>	$-8 + 18$								
	$17 + -1$	(D) 16	(T) -8		$6 + -19$	(N) 10	(W) -16						
	$-11 + 5$	(R) -20	(B) -6		$13 + 5$	(F) 18	(S) -13						
<b>5</b>	$4 + -9$			<b>12</b>	$11 + -2$								
	$-7 + -15$	(A) 14	(O) 9		$-7 + -4$	(L) 12	(E) 9						
	$-3 + 12$	(P) -22	(C) -5		$-15 + 8$	(D) -7	(T) -11						
<b>6</b>	$16 + -8$			<b>13</b>	$-6 + 12$								
	$-5 + 20$	(M) 8	(T) 15		$99 + -99$	(P) -2	(G) 6						
	$-6 + 6$	(S) -4	(W) 0		$3 + -5$	(R) 0	(B) -4						
<b>7</b>	$-13 + -4$			<b>14</b>	$-20 + -30$								
	$-7 + 2$	(F) -5	(Z) -17		$70 + -40$	(Y) -50	(M) 50						
	$14 + -16$	(E) -2	(O) 10		$-70 + 40$	(N) 30	(T) -30						
<b>8</b>	<b>4</b>	<b>11</b>	<b>1</b>	<b>6</b>	<b>9</b>	<b>14</b>	<b>7</b>	<b>10</b>	<b>3</b>	<b>13</b>	<b>5</b>	<b>2</b>	<b>12</b>

# When Do a Bunch of Cold Germs Celebrate a Victory?



Do each exercise and find your answer in the corresponding set of answer boxes. Write the letter of the exercise in the box containing the answer.

(E)  $-3 + -4$

(I)  $-20 + -30$

(Y)  $-6 + -1 + -3$

(N)  $-8 + -5$

(A)  $7 + 8$

(W)  $-4 + -7 + -11$

(H)  $-7 + -7$

(B)  $-9 + -2$

(G)  $-9 + -9 + -9$

(T)  $-1 + -16$

(N)  $-4 + -40$

(H)  $13 + 2 + 6$

(E) On first down, the Vultures lost 6 yd. On second down, they lost 5 yd. On third down, they lost 8 yd. Use an integer to express their overall change in position as a result of the three plays. \_\_\_\_\_ yd

(R) A scuba diver dove 18 ft below the surface to observe a school of fish. Then he dove another 24 ft to the bottom. If he started at sea level, what was his elevation when he reached the bottom? \_\_\_\_\_ ft

-22	-14	-19	-44	18	-17	21	-7	-10	-36	-11	-42	-50	-13	-27	-18	15
-----	-----	-----	-----	----	-----	----	----	-----	-----	-----	-----	-----	-----	-----	-----	----

(S)  $-33 + -15$

(O)  $-47 + -20$

(E)  $-7 + -13 + -6$

(E)  $-29 + -64$

(E)  $-8 + -75$

(T)  $-19 + -48 + -5$

(A)  $-41 + -58$

(S)  $35 + 39$

(H)  $-25 + -25 + -25$

(I)  $72 + 16$

(N)  $-87 + -24$

(Z)  $-8 + -8 + -8 + -8$

(M) The temperature at 10 A.M. was  $-7^{\circ}\text{F}$ . By noon, the temperature had dropped  $12^{\circ}\text{F}$ . By 2 P.M., it had dropped another  $5^{\circ}\text{F}$ . What was the temperature at 2 P.M.? \_\_\_\_\_  $^{\circ}\text{F}$

(N) Rolex wrote a check for \$45. The next day, he wrote a check for \$32. Use an integer to express the change in his bank balance when the two checks were cashed. \$\_\_\_\_\_

-24	-99	-111	-76	-72	-67	82	-75	88	74	-27	-48	-77	-26	-93	-32	-83
-----	-----	------	-----	-----	-----	----	-----	----	----	-----	-----	-----	-----	-----	-----	-----

# Why Do Some People Say That Captain Kirk Has Three Ears?

Do each exercise and find your answer in one of the boxes at the bottom of the page. Write the letter of the exercise in this box. (To make it easier to find each answer, the answers are arranged in order from smallest to largest.)

(E)  $4 - 6$

(R)  $3 - -1$

(F)  $4 - -8$

(A)  $-14 - 10$

(N)  $30 - 9$

(I)  $2 - 16$

(E)  $35 - -7$

(A)  $-3 - -13$

(S)  $-15 - 5$

(R)  $-1 - -20$

(T)  $-8 - -8$

(A)  $6 - 24$

(D)  $-7 - -15$

(H)  $-13 - -1$

(R)  $-10 - -60$

(A)  $9 - -6$

(E)  $-11 - -2$

(H)  $-20 - 30$

(N)  $-5 - -12$

(I)  $18 - -18$

(A)  $4 - 9$

(G)  $-4 - 9$

(L)  $13 - -3$

(E)  $-80 - -50$

(A)  $-7 - -10$

(R)  $13 - 20$

(H)  $-14 - 11$

(A)  $24 - 18$

(L)  $-5 - -2$

(O)  $-6 - -26$

(T)  $-12 - -1$

(I)  $12 - -1$

(F)  $99 - 100$



(E)  $-6 - -8$

(A)  $-10 - -2$

(F)  $3 - -15$

(R)  $-11 - 4$

(N)  $50 - 36$

(T)  $0 - -28$

-50	-30	-27	-25	-24	-20	-19	-18	-16	-15	-14	-13	-12	-11	-10	-9	-8	-7	-6	-5	-4	-3	-2	-1	0
1	2	3	4	5	6	7	8	9	10	11	12	13	14	15	16	17	18	19	20	21	28	36	42	50

# FIND A MATCH

## DIRECTIONS:

Each of the two blocks below is divided into 12 boxes containing exercises. Find two exercises, one in the top block and one in the bottom block, that have the same answer. Each time you find two exercises with the same answer, transfer the word from the top box to the corresponding bottom box. Keep working and you will spell out a message.

$-8 + 4 - ^{-}9 = 5$ TRYING	$10 - 14 + ^{-}8 = 2$ SOME	$-5 - ^{-}7 + ^{-}5 = 2$ IN
$-8 + ^{-}1 + ^{-}20 + ^{-}3 = 32$ ARE	$2 - 17 + 21 - ^{-}1 = 5$ TO	$-4 - ^{-}4 + 8 - 8 = 2$ A
$-1 + ^{-}1 - ^{-}1 + 1 - ^{-}1 = 1$ DOUGH	$-70 + 90 + ^{-}50 = 30$ MAKE	$-7 - ^{-}7 + 7 - ^{-}7 = 0$ BAKERS
$9 + ^{-}16 - ^{-}8 + 11 = 6$ FORTUNE	$17 - ^{-}2 + ^{-}20 - 6 = 9$ PRETZEL	$-25 + ^{-}75 - ^{-}50 = 0$ CROOKED
$=30 + 15 - ^{-}9 - 6 = 30$	$5 - ^{-}4 + 9 - 25 = 9$	$-29 + 39 + ^{-}7 - ^{-}11 = 0$
$40 - 80 - ^{-}15 + ^{-}7 = 22$	$6 - ^{-}2 - 19 + 16 = 1$	$-14 + 44 + ^{-}23 = 7$
$24 + ^{-}48 + ^{-}12 + 6 = 30$	$48 + ^{-}16 + ^{-}16 + ^{-}16 = 0$	$32 - 35 - ^{-}5 + 10 = 0$
$-3 - ^{-}13 - 10 - 3 = 33$	$-30 + 40 - 50 + ^{-}10 = 10$	$15 + ^{-}6 - 13 + 5 = 1$